

NOTES - UNLESS OTHERWISE SPECIFIED:

1. MATERIALS:

PLASTIC COMPONENTS: VALOX V3900WX RESIN PBT/PC BLEND UV STABILIZED AND FLAME RETARDANT
 POST: C36000 BRASS
 WASHER: C36000 BRASS
 HEX NUT: C36000 BRASS
 SPRING: 17-7PH STAINLESS STEEL

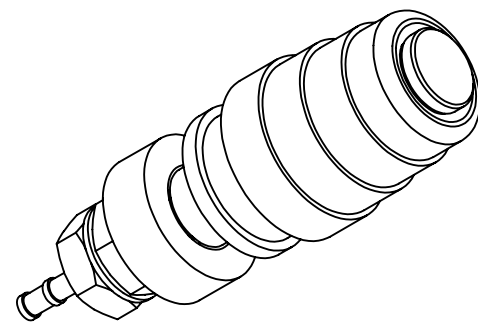
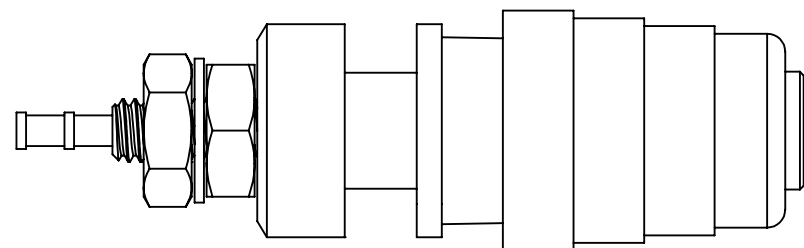
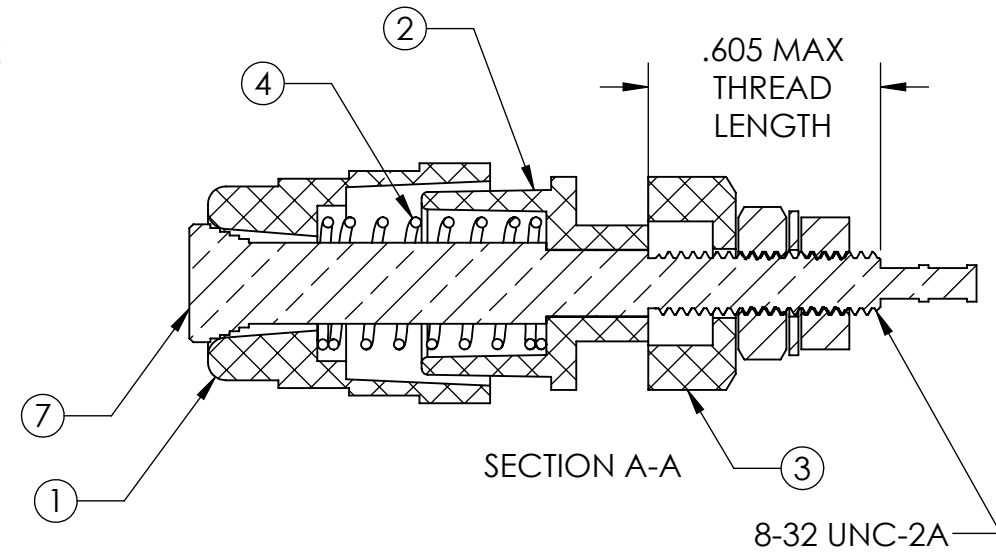
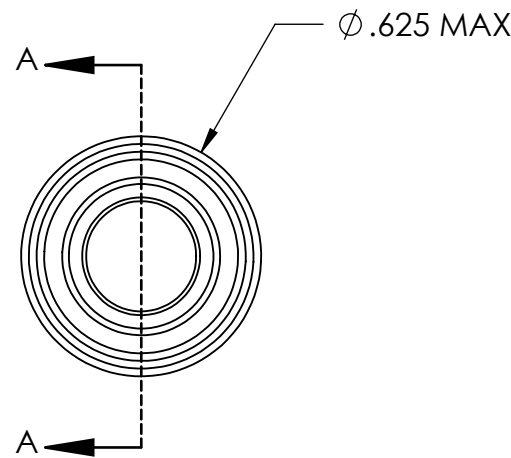
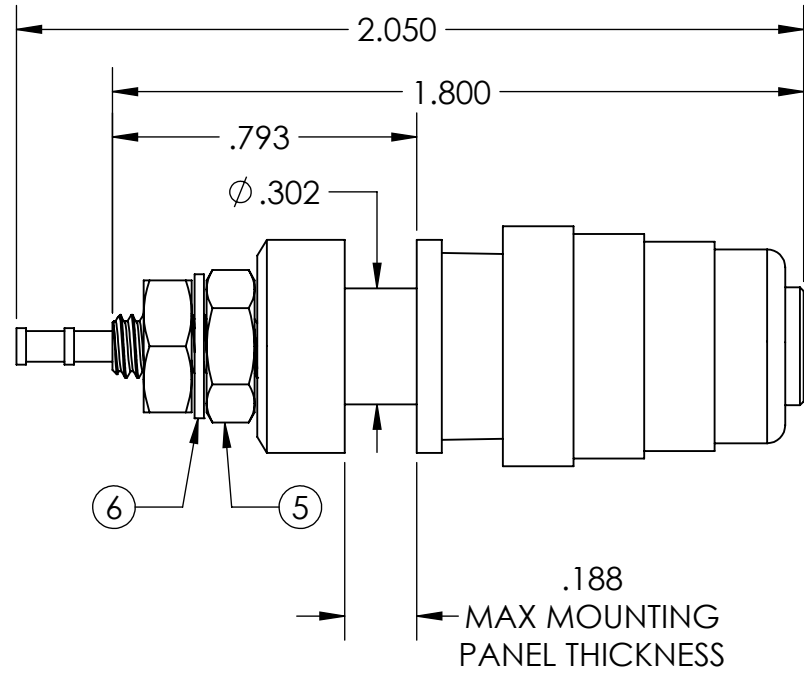
2. COATINGS/SURFACE PREPARATION:

C36000 BRASS COMPONENTS NICKEL COATED PER ABBATRON DRAWING E-451, CODE 10

3. ASSEMBLY DRAWING DIMENSION TOLERANCES FOR REFERENCE ONLY

REVISIONS				
ZONE	REV	DESCRIPTION	DATE	APPR
	-	INITIAL ENGINEERING RELEASE	12/09/2015	JPH

PART NO.	COLOR
-102	RED
-103	BLACK



ISOMETRIC VIEW
FOR REFERENCE ONLY
SCALE NONE

1	1	1		1836-14UM-10X	CAP, TOP LOAD BINDING POST		
1	1	2		1836-13-10X	BASE, CORE		
1	1	3		1836-12-10X	STAND OFF, CORE BASE		
1	1	4		1836-11	SPRING, TOP LOAD BINDING POST		
2	2	5		1192	HEX NUT, 8-32 X 1 1/32 INCH (W) X 1/8 INCH (H)		
1	1	6		1151AA09	WASHER, #8, .174 INCH ID, .375 INCH OD, .030 INCH (T)		
1	1	7		1836-16	CORE, TOP LOAD BINDING POST		

QTY	FIND NO	CAGE CODE	PART OR IDENTIFYING NUMBER	NOMENCLATURE OR DESCRIPTION	DRAWING OR SPEC NO	NOTES
-103	-102					

PROPRIETARY AND CONFIDENTIAL
 THE INFORMATION CONTAINED IN THIS DRAWING IS THE SOLE PROPERTY OF ABBATRON. ANY REPRODUCTION IN PART OR AS A WHOLE WITHOUT THE WRITTEN PERMISSION OF ABBATRON IS PROHIBITED.

UNLESS OTHERWISE SPECIFIED:				PARTS LIST		ABBATRON	
DIMENSIONS ARE IN INCHES				DRAWN	JPH	12/09/2015	
TOLERANCES:				CHECKED		TITLE:	
FRACTIONAL: ± 1/64				ENG APPR.		POST, BINDING, TOP LOAD	
ANGULAR: ± 1				MFG APPR.			
TWO PLACE DECIMAL ±.01				Q.A.		SIZE	
THREE PLACE DECIMAL ±.005				COMMENTS:		DWG. NO.	
INTERPRET GEOMETRIC TOL. PER: ASME Y14.5-2009				SALES DRAWING		REV	
MATERIAL See Notes				DO NOT SCALE DRAWING		SCALE: 2:1	
FINISH 125 Ra, µin						WEIGHT:	
APPLICATION						SHEET 1 OF 1	