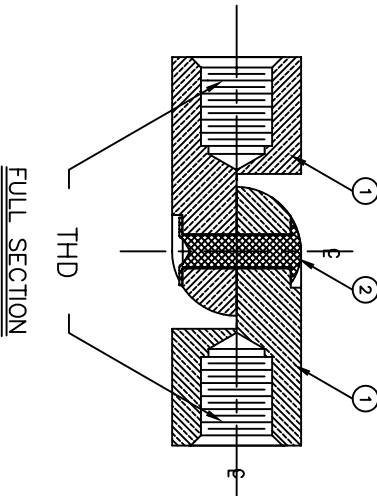
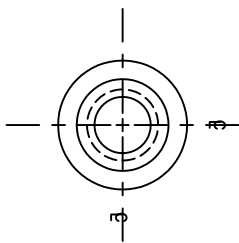
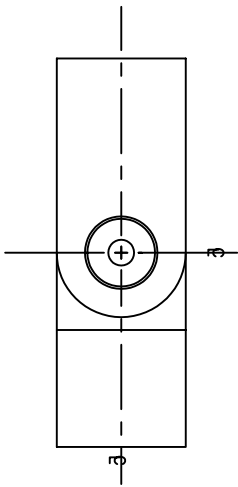
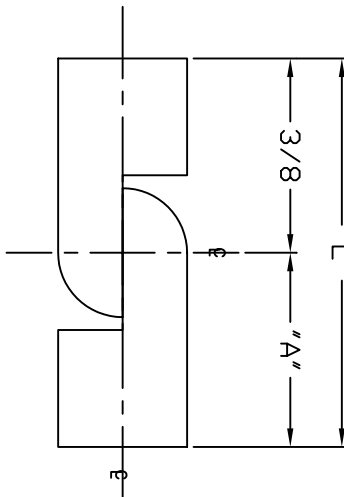
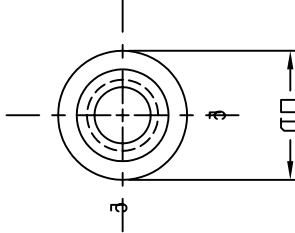
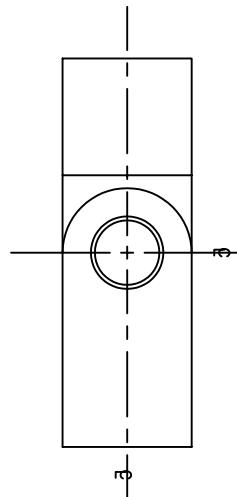


REVISIONS	
SYM	DESCRIPTION
REV	DATE
APP	APPR



PART#	"L"	OD	THD	"A"
3021	3/4	3/16	4-40	3/8
3022	1	3/16	4-40	5/8
3023	3/4	1/4	6-32	3/8
3024	1	1/4	6-32	5/8
3025	3/4	1/4	8-32	3/8
3026	1	1/4	8-32	5/8

BILL OF MATERIALS			
DET.	QTY.	DESCRIPTION	MATERIAL
1	2	STANDOFF BODY	BRASS
2	1	RIVET	STEEL
		PLATING	
		BRIGHT TN	ZINC

MATERIAL	SEE BOM	FINISH	SEE BOM
DIMENSIONAL TOLERANCES			
UNLESS OTHERWISE SPECIFIED			
.XX	.XX	.XXX	
---	---	---	
FRACTIONS	ANGLES	SCALE	
---	---	5:1	
HEAT TREAT			
PART SCALE	1=1		
TITLE	3021-3026		
FEMALE SWIVEL			
STANDOFF ASSEMBLY			
DRAWN BY	E. MCKINNEY	DATE	7-11-91
CHECKED	E. MCKINNEY	DATE	7-11-91
APPROVED	D. MILLER	DATE	7-18-91
SIZE			
DRAWING NUMBER	SD: 3021-3026		
ISSUE	A		

ABBATRON
Electronic Connectors and Hardware
13690 S. MOSBERTOWN RD
MEADOWVILLE, PA 16335