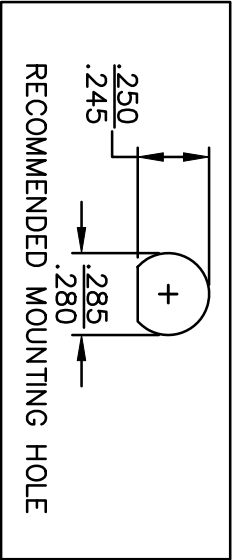
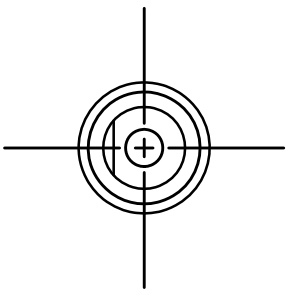
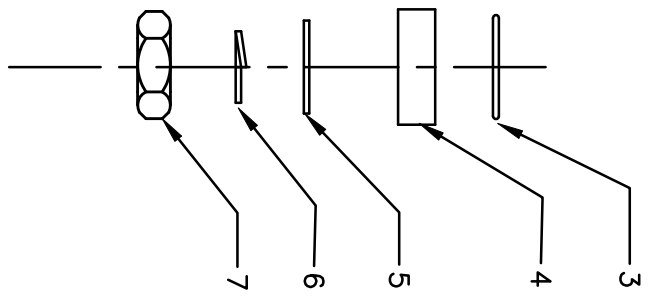
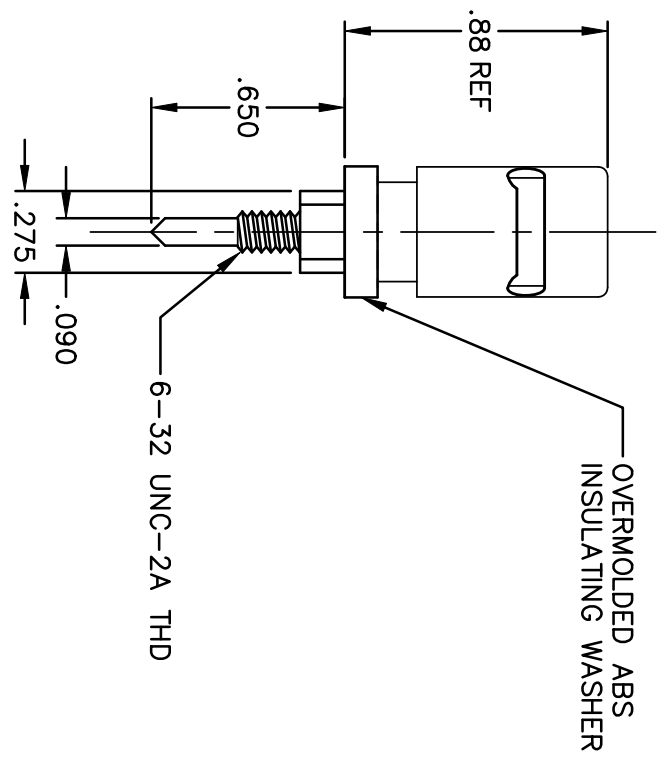
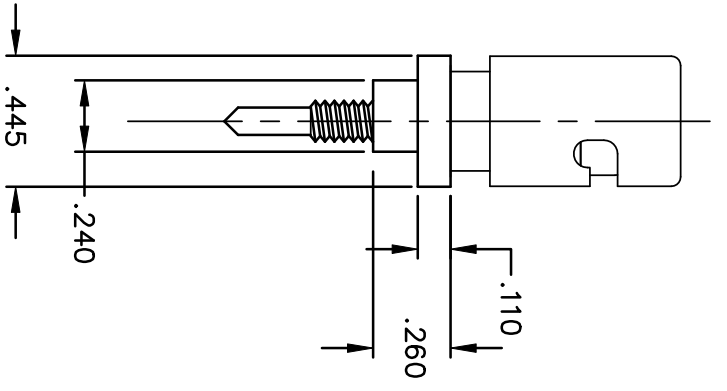


PART NO.	COLOR
1839-102	RED
1839-103	BLACK

SYM	REVISIONS	DESCRIPTION	REVISED	DATE	APPR
-----	-----------	-------------	---------	------	------



BILL OF MATERIALS				
DET.	QTY.	DESCRIPTION	MATERIAL	PLATING
1	1	BODY ASSEMBLY	SEE DWG	SEE DWG
2	1	CAP	RUBBER	-
3	1	O-RING	BUNA-N	-
4	1	INSULATOR/WASHER	DELRI	-
5	1	FLAT WASHER	BRASS	NICKEL #10
6	1	LOCK WASHER/SPLIT NUT	STEEL	NICKEL #10
7	1	NUT	BRASS	NICKEL #10

MATERIAL:	SEE BOM
FINISH:	SEE BOM
DIMENSIONAL TOLERANCES UNLESS OTHERWISE SPECIFIED	XX .XXX .XXX .XXX
FRACTIONS ANGLES SCALE	--- --- 2:1
THERM TREAT:	CODE 0
PLOT SCALE:	1=1

TITLE:	1839
BINDING POST OVERMOLDED INSULATOR	
DRAWN:	T. LORD
CHECKED:	T. LORD
APPROVED:	T. LORD
DATE:	2/9/05
DATE:	2/9/05
DATE:	2/9/05

**ABBATRON**

Electronic Connectors and Hardware

13680 S. MOSERTOWN RD  
MEADVILLE, PA 16335

SIZE: **B** DRAWING NUMBER: **SD-1839** SSUT: **B**