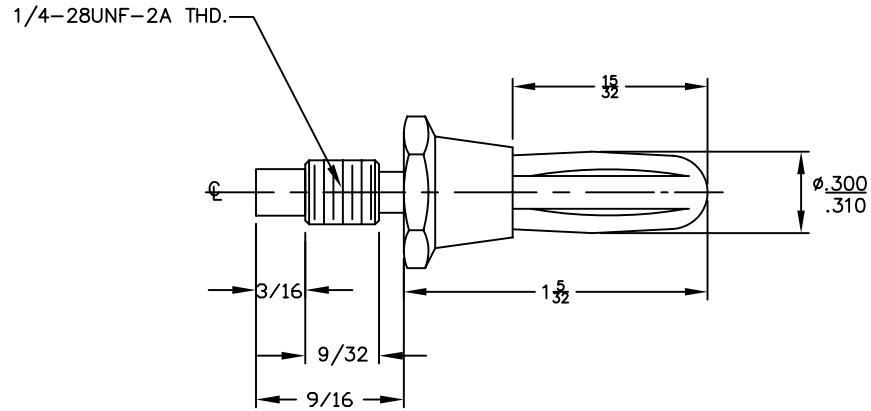
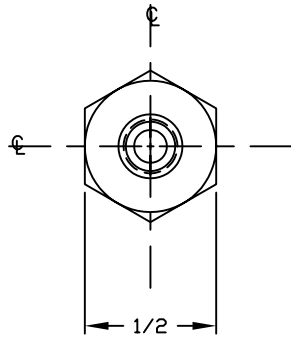
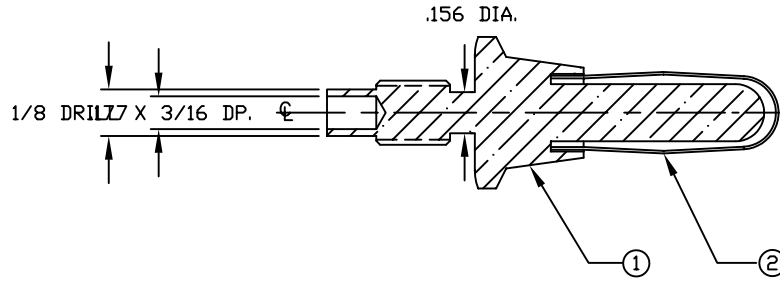


BILL OF MATERIALS				
DET.	QTY.	DESCRIPTION	MATERIAL	PLATING
1	1	BODY	BRASS	CODE 0
2	1	CONTACT	BERYLLIUM COPPER	CODE 0
3	1	LUG *	BRASS	CODE 29
4	1	NUT *	STEEL	CODE 10

REVISIONS				
SYM	DESCRIPTION	REVISED BY	DATE	APPR

\* NOT SHOWN



NOTE:  
BODY & CONTACT TO BE ASSEMBLED BEFORE PLATE  
PLATE NICKEL OVER COPPER

ELECTRICAL:  
VOLTAGE: 1000V  
AMPERAGE: 25 AMPS

MATERIAL			SEE BOM			FINISH			SEE BOM					
DIMENSIONAL TOLERANCES UNLESS OTHERWISE SPECIFIED						TITLE 185 GIANT BANANA PLUG						<b>ABBATRON</b> Electronic Connectors and Hardware 632 Arch Street, Meadville, Pa. 16335		
.XX	.XXX	.XXXX	±.005											
FRACTIONS		ANGLES	SCALE											
±1/64			2X											
HEAT TREAT			CODE 0			DRAWN T. LORD			DATE 2/17/04					
PLOT SCALE			1=1			CHECKED T. LORD			DATE 2/17/04					
						APPROVED T. LORD			DATE 2/17/04					
						SIZE	DRAWING NUMBER		ISSUE					
						B	SD-185		A					