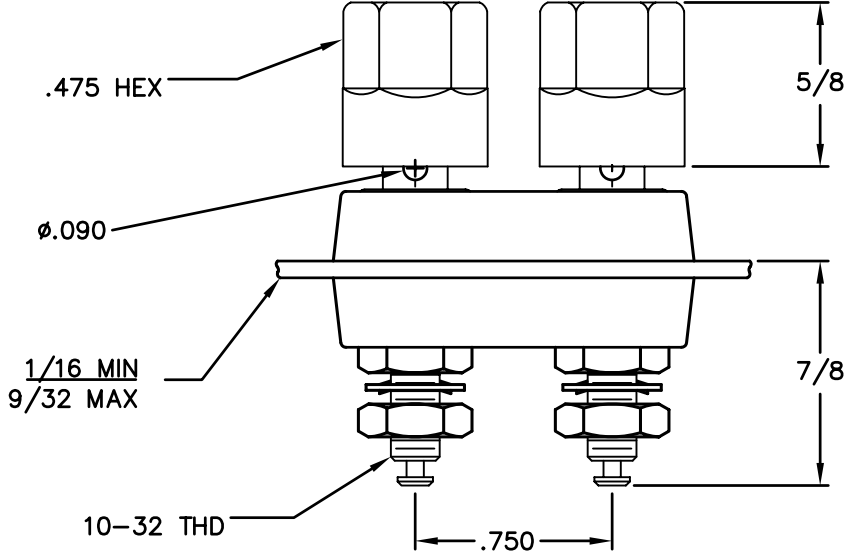
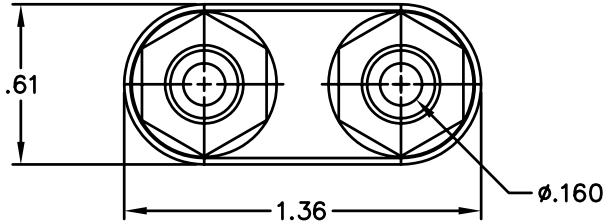


REVISIONS				
SYM	DESCRIPTION	REVISED BY	DATE	APPR



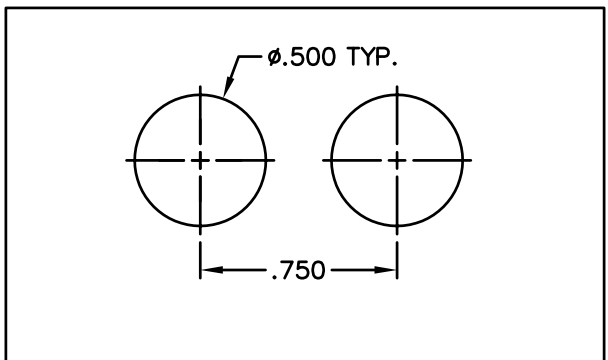
NOTES:

MATERIAL-

INSULATING PORTIONS: POLYCARBONATE
 BODY: BRASS, TIN FINISH
 HARDWARE: BRASS, NICKEL FINISH

ELECTRICAL-

VOLTAGE: 1000 VDC
 CURRENT: 30 AMPS



MATERIAL: SEE NOTES			FINISH: TIN		<h1>ABBATRON</h1> <p>Electronic Connectors and Hardware 632 Arch Street, Meadville, Pa. 16335</p>					
DIMENSIONAL TOLERANCES UNLESS OTHERWISE SPECIFIED			TITLE: 269XX					SIZE	DRAWING NUMBER	ISSUE
.XX	.XXX	.XXX	DUAL BINDING POST							
----	----	----	10-32 THD							
FRACTIONS			ANGLES		SCALE		B	SD-269	E	
----	----	2:1	DRAWN: T. LORD		DATE: 2/27/04					
HEAT TREAT: ----			CHECKED: T. LORD		DATE: 2/27/04					
PLOT SCALE: 1=1			APPROVED: T. LORD		DATE: 2/27/04					