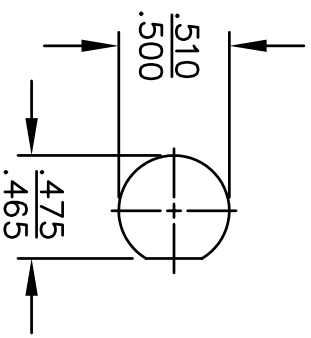


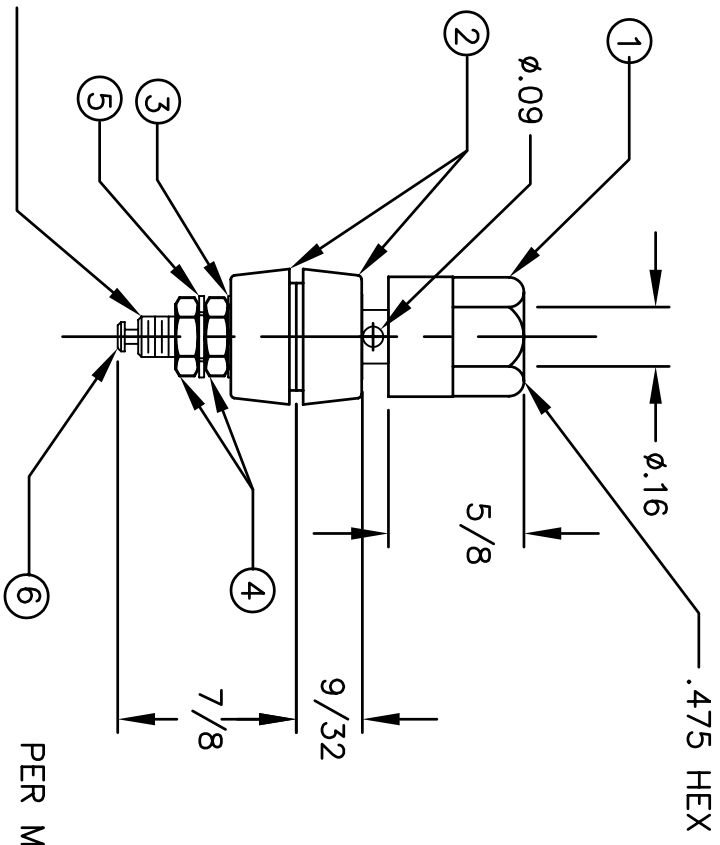
DET	QTY	DESC	MATERIAL	FINISH
1	1	CAP	LEXAN	----
2	2	WASHER	LEXAN	----
3	1	WASHER	BRASS	TIN
4	2	NUT	BRASS	TIN
5	1	WASHER	BRASS	TIN
6	1	BODY	BRASS	TIN

REVISIONS	DESCRIPTION	REVISED BY	DATE	APPR



RECOMMENDED MOUNTING HOLE

10-32 UNC-2A THD



PER MIL-P-55149/1D

PART #	COLOR
899-101	WHITE
899-102	RED
899-103	BLACK
899-104	GREEN
899-105	BLUE
899-106	ORANGE
899-107	YELLOW
899-108	BROWN
899-112	VIOLET
899-113	GRAY

MATERIAL: SEE BOM		FINISH: SEE BOM	
DIMENSIONAL TOLERANCES UNLESS OTHERWISE SPECIFIED		TITLE: 899	
.XX	.XXX	BINDING POST	
----	----	10-32 THD	
FRACTIONS	ANGLES	SCALE	
----	----	1:1	
HEAT TREAT:	CODE 0	DRAWN: T. LORD	DATE: 3/31/04
PLLOT SCALE: 1:1		CHECKED: T. LORD	DATE: 3/31/04
		APPROVED: T. LORD	DATE: 3/31/04

ABBATRON
 Electronic Connectors and Hardware
 632 Arch Street, Meadville, Pa. 16335

SIZE	DRAWING NUMBER	ISSUE
A	SD-899	A