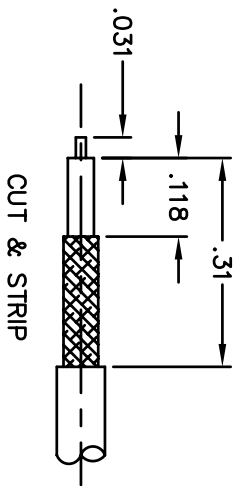
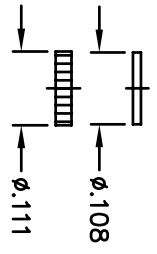
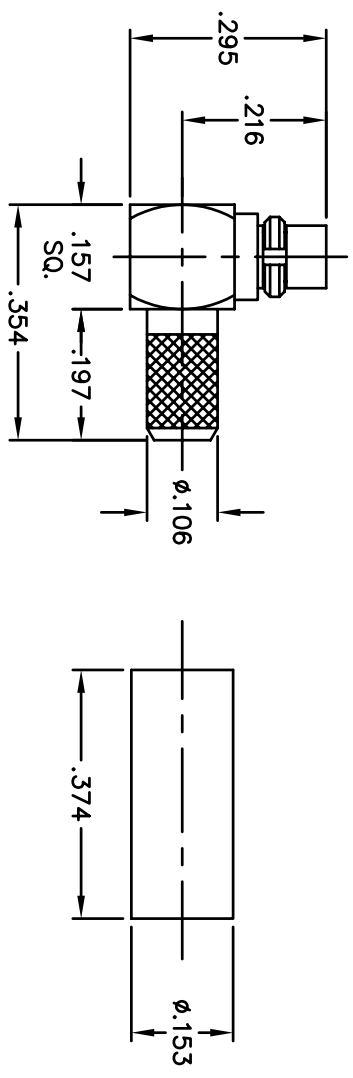


BILL OF MATERIALS				
DET.	QTY.	DESCRIPTION	MATERIAL	PLATING
1	1	BODY	BRASS	GOLD
2	1	CONTACT	BeCu	GOLD
3	1	INSULATOR	PTFE	—
4	1	FERRULE	BRASS	GOLD
5	1	COVER	BRASS	GOLD
6	1	G-RING	BeCu	GOLD
7	1	INSULATOR	PTFE	—

REVISIONS		REVISED DATE	APPR
SYM	DESCRIPTION		



CUT & STRIP



KEY PERFORMANCE

- 1) IMPEDANCE: 50 ohm
- 2) FREQUENCY: 0-6GHz
- 3) CONTACT RESISTANCE: CENTER CONDUCTOR: 5.0 MILLIOHMS MAX
OUTER CONDUCTOR: 2.5 MILLIOHMS MAX
- 4) INSULATION RESISTANCE: 1000 MEGOHMS MIN
- 5) VOLTAGE WITHSTANDING: 500V MIN
- 6) VSWR 1.5 MAX

MATERIAL: SEE BOM		FINISH: SEE BOM		HEAT TREAT: ---	
DIMENSIONAL TOLERANCES UNLESS OTHERWISE SPECIFIED		TITLE: MMCX5133		Electronic Connectors and Hardware	
XX	.XXX	MMCX R/A PLUG, CRIMP		632 Arch Street, Meadville, Pa. 16335	
---	---	RG-174/U,188A/U,316/U		ABBATRON	
FRACTIONS	ANGLES	SCALE		DRAWING NUMBER	
---	---	5:1		B	
SURFACE FINISH: 125		.002		DATE: 8/27/07	
DRAWN: T. LORD		DATE: 8/27/07		ISSUE	
CHECKED: T. LORD		DATE: 8/27/07		MMCX5133	
APPROVED: T. LORD		DATE: 8/27/07		-	

THIS DRAWING AND THE INFORMATION THEREIN IS THE PROPERTY OF ABBATRON, LLC AND IS UNAUTHORIZED FOR REPRODUCTION WITHOUT THE WRITTEN PERMISSION OF ABBATRON, LLC. REPRODUCTION IS PROHIBITED.