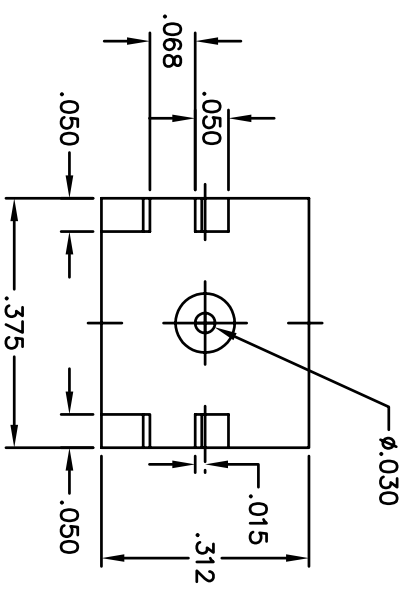
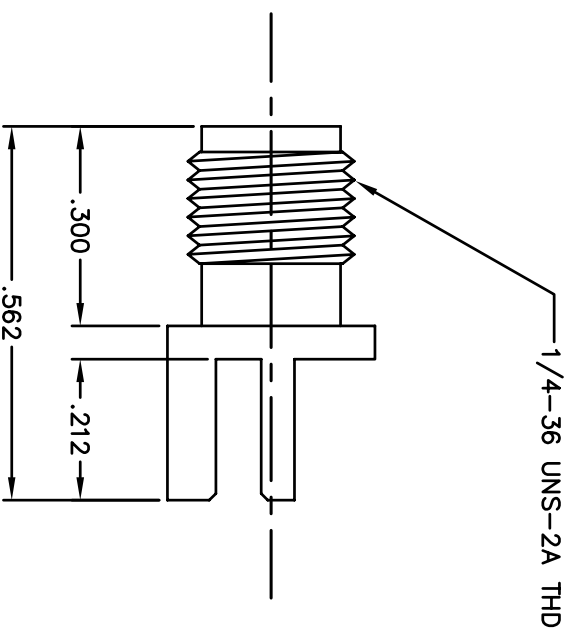


BILL OF MATERIALS				
DET.	QTY.	DESCRIPTION	MATERIAL	PLATING
1	1	BODY	BRASS	GOLD
2	1	PIN	BeCu	GOLD
3	1	INSULATOR	PTFE	-

REVISIONS		REVISED DATE	APPR
SYM	DESCRIPTION		



KEY PERFORMANCE

- 1) IMPEDANCE: 50 ohm
- 2) FREQUENCY: 0-18GHZ
- 3) CONTACT RESISTANCE:
CENTER CONDUCTOR: 6.0 MILLIOHMS MAX
OUTER CONDUCTOR: 2.0 MILLIOHMS MAX
- 4) INSULATION RESISTANCE: 5000 MEGOHMS MIN
- 5) VOLTAGE WITHSTANDING: 1000V MIN
- 6) VSWR 1.3 MAX

THIS DRAWING AND THE INFORMATION THEREIN IS THE PROPERTY OF ABBATRON, LLC AND IS UNCLASSIFIED, UNLESS OTHERWISE INDICATED. REPRODUCTION THEREOF IS PROHIBITED.

MATERIAL: SEE BOM	FINISH: SEE BOM	HEAT TREAT: ---
DIMENSIONAL TOLERANCES UNLESS OTHERWISE SPECIFIED XX .XXX .XXX --- .--- .---	TITLE: SMA5229 SMA JACK EDGE MOUNT	
FRACTIONS ANGLES SCALE --- .--- .---	DRAWN: T. LORD DATE: 11/6/07	
SURFACE FINISH 129	APPROVED: T. LORD DATE: 11/6/07	CHECKED: T. LORD DATE: 11/6/07
0.002		
<p style="text-align: center;">ABBATRON</p> <p>Electronic Connectors and Hardware 632 Arch Street, Meadville, Pa. 16335</p>		SIZE: B
DRAWING NUMBER: SMA5229		ISSUE: -