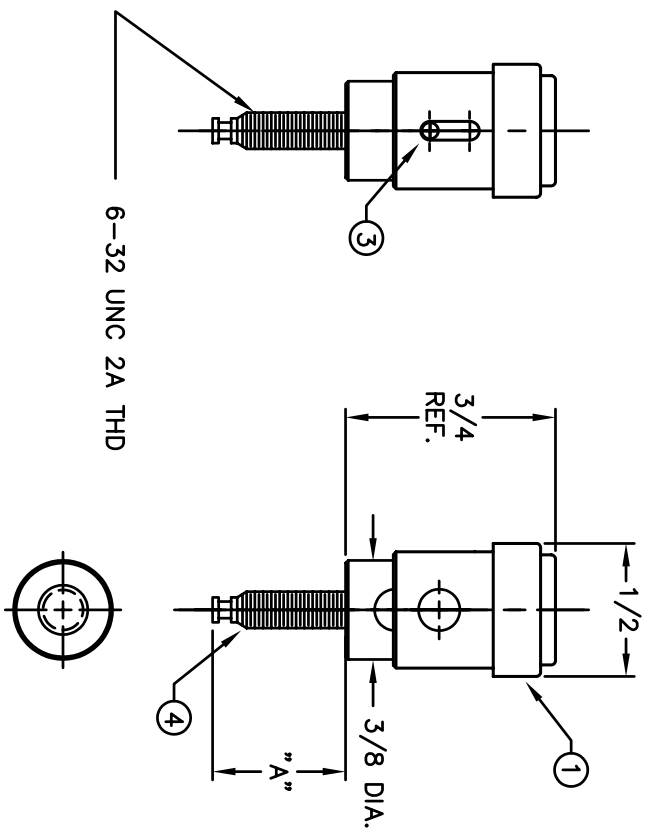


REVISIONS		REVISED	DATE	APPR
SYM	DESCRIPTION			

BILL OF MATERIALS				
DET.	QTY.	DESCRIPTION	MATERIAL	FINISH
1	1	SHELL/CAP SUB-ASSY	BRASS/NYLON	NICKEL
2	1	SPRING	HARD DRAWN SPRING WIRE	ZINC
3	1	CROSS PIN	STEEL	ZINC
4	1	BDG POST BODY	1/2H 360 BRASS	NICKEL



BINDING POST ASSEMBLY			
PART NO.	FINISH	A	
2802-102	RED	3/8	
2802-103	BLACK	3/8	
2803-102	RED	1/2	
2803-103	BLACK	1/2	
2804-102	RED	3/4	
2804-103	BLACK	3/4	

MATERIAL: SEE TABLE		FINISH: SEE TABLE	
DIMENSIONAL TOLERANCES UNLESS OTHERWISE SPECIFIED		TITLE: 280x-10x SERIES SPRING LOADED BINDING POST ASSY.	
XX	.XXX	XXX	
---	---	---	
FRACTIONS	ANGLES	SCALE	
---	---	2X	
HEAT TREAT:	---	DRAWN:	T. LORD DATE: 12/30/02
PLOT SCALE:	1=1	CHECKED:	T. LORD DATE: 12/30/02
		APPROVED:	T. LORD DATE: 12/30/02
		SIZE	B
		DRAWING NUMBER	SD: SMP-00041
		ISSUE	D

ABBATRON
Electronic Connectors and Hardware
632 Arch Street, Meadville, Pa. 16335