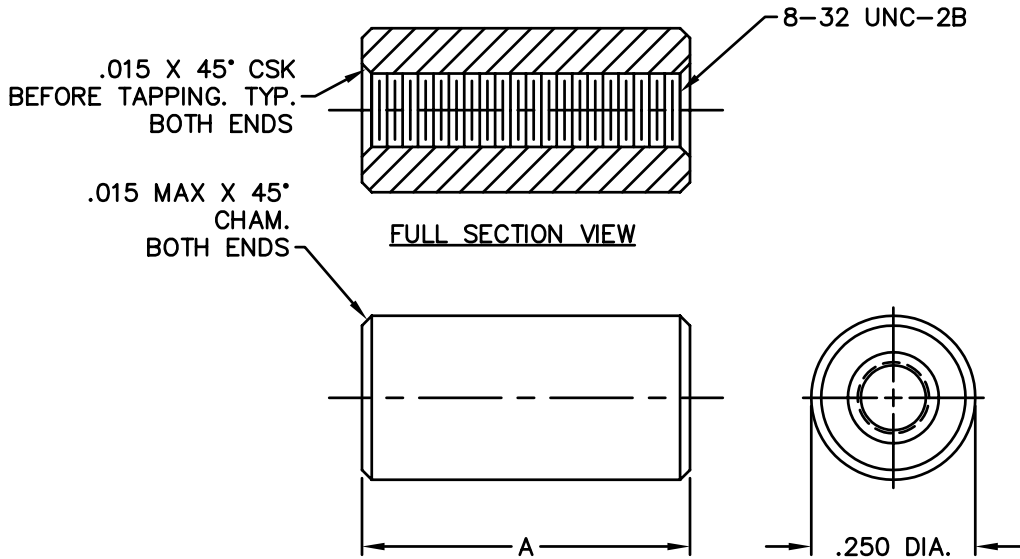


REVISIONS				
SYM	DESCRIPTION	REVISED BY	DATE	APPR

**NOTE:**

- 1.) ALL DIMENSIONS APPLY BEFORE PLATING
- 2.) THREADS SHALL BE TO GAUGE FIT AFTER PLATING OR OTHER FINISH.
- 3.) SURFACES SHALL BE SMOOTH, AND FREE OF TOOL MARKS.
- 4.) BREAK ALL SHARP CORNERS AND REMOVE BURRS.



STANDOFF	
PART NO.	DIM. A
8360	.125
9242	.187
8361	.250
9243	.312
8362	.375
9244	.437
8363	.500
9245	.562
8364	.625
9246	.687
8365	.750
9247	.812
8366	.875
9248	.937
8367	1.000

MATERIAL: ALUMINUM ALLOY 2011i T-3		FINISH: CLEAR CHROMATE		<h1 style="text-align: center;">ABBATRON</h1> <p style="text-align: center;">Electronic Connectors and Hardware 632 Arch Street, Meadville, Pa. 16335</p>			
DIMENSIONAL TOLERANCES UNLESS OTHERWISE SPECIFIED			TITLE: 8360-8367 & 9242-9248				
.XX	.XXX	.XXX	ALUMINUM RND STANDOFF				
---	---	---	1/4 O.D. THD THRU 8-32				
FRACTIONS		ANGLES	SCALE	DRAWN: T. LORD DATE: 3/14/05			
---		---	---	CHECKED: T. LORD DATE: 3/14/05			
HEAT TREAT: ---		PLOT SCALE: 1=1		APPROVED: T. LORD DATE: 3/14/05			
SIZE	DRAWING NUMBER			ISSUE			
B	SD: SMP-00442			B			