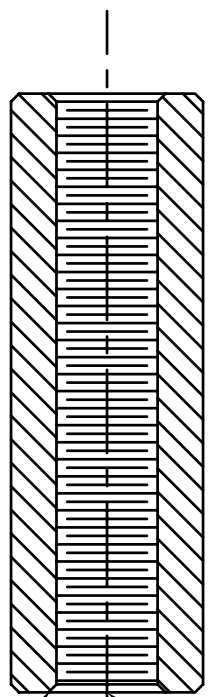
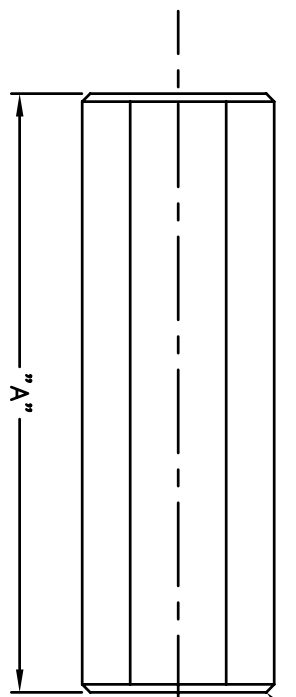
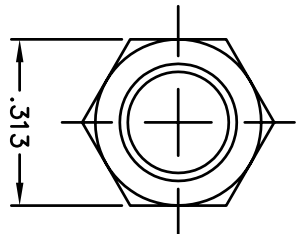


REVISIONS		REVISED DATE	APPR
SYM	DESCRIPTION		



.015x45° CHAMFER BOTH ENDS

10-32 UNC-2B

.015x45° CSK BEFORE TAPPING BOTH ENDS

PART#	"A"
8460	.125
9305	.187
8461	.250
9306	.312
8462	.375
9307	.437
8463	.500
9308	.562
8464	.625
9309	.687
8465	.750
9310	.812
8466	.875
9311	.937
8467	1.000

MATERIAL: ALUMINUM 2011-T3		FINISH: CLEAR CHROMATE	HEAT TREAT: ---
DIMENSIONAL TOLERANCES UNLESS OTHERWISE SPECIFIED		TITLE: ALUMINUM HEX STANDOFF	
.XX	.XXX	.XXX	10-32 THD- TAPPED THRU
FRACTIONS	ANGLES	SCALE	
---	---	NONE	
SURFACE FINISH: 125		DRAWN: T. LORD DATE: 12/16/05	
125		CHECKED: T. LORD DATE: 12/16/05	
125		APPROVED: T. LORD DATE: 12/16/05	
.002		SIZE: A	DRAWING NUMBER: SD: SMP-00448
ISSUE: B		Electronic Connectors and Hardware	
ISSUE: B		632 Arch Street, Meadville, Pa. 16335	

THIS DRAWING AND THE INFORMATION THEREIN IS THE PROPERTY OF ABBATRON, LLC. ANY REPRODUCTION THEREOF IS PROHIBITED.

ABBATRON